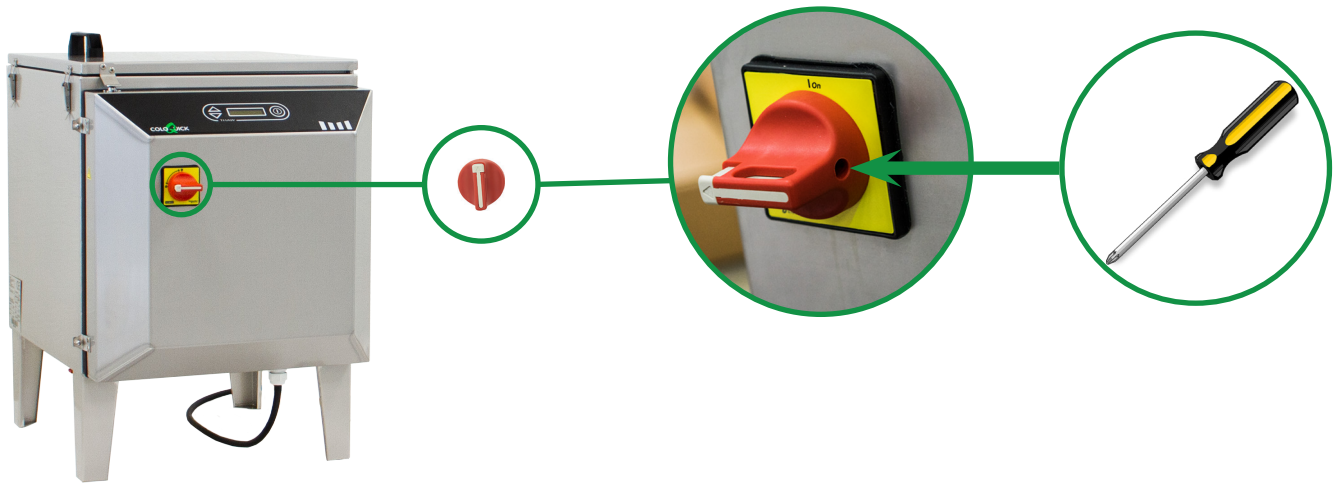


# COLOQUICK

## THAW UNIT ASSEMBLY GUIDE



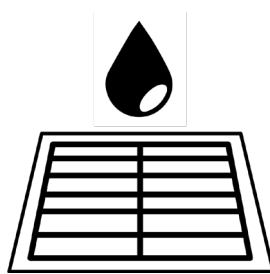


# 1 Room temperature

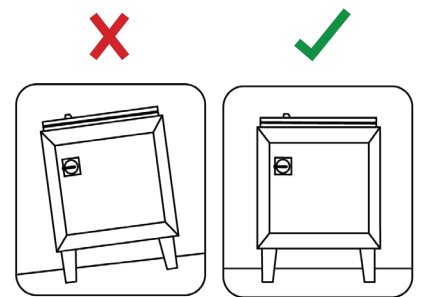


Max: 40 °C  
104°F  
Min: 5 °C  
40 °F

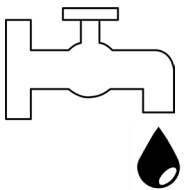
# 2 Place close to a drain



# 3 Place on even surface

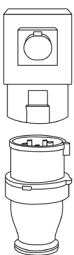


# 4 Fill water into water bath before turning on the THAW unit!



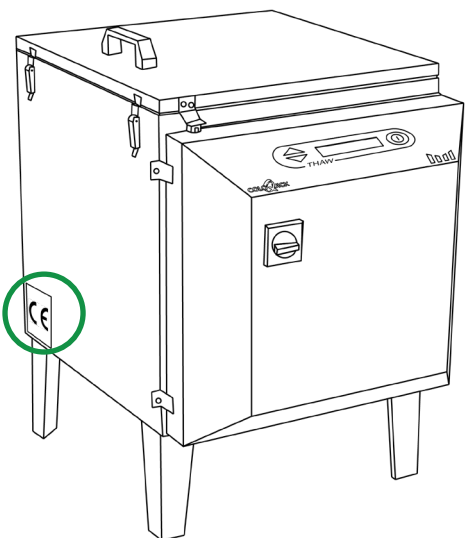
**Water temperature**  
Max. 40 °C  
Max. 104 °F

# 5 Power connection



**OBS: Fill the water bath with water before connecting to power!**

Connect the THAW unit to the correct power source. Any new installations should be performed by professionals.



View the CE marking for correct information on power source.