

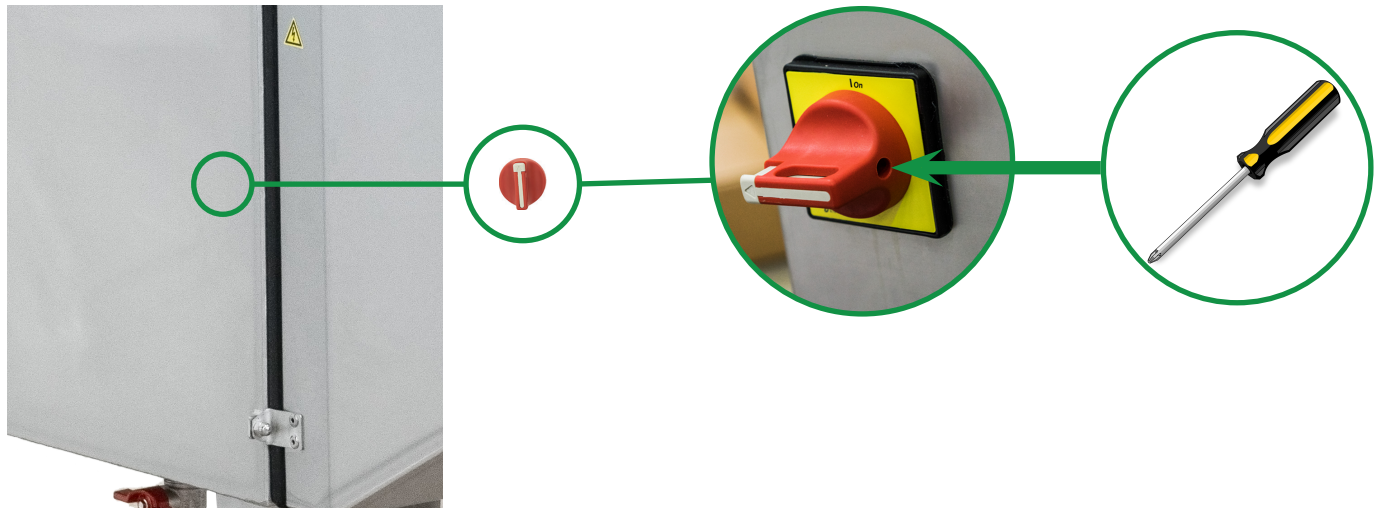
# COLOQUICK

A BETTER FUTURE

## THAW UNIT

ASSEMBLY GUIDE





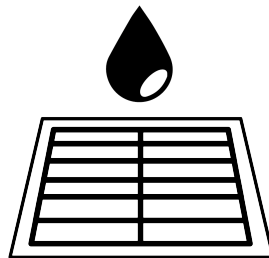
## 1 Room temperature



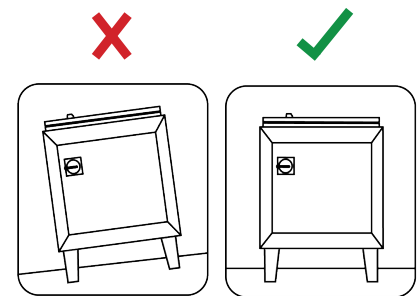
Max: 40 °C  
104°F

Min: 5 °C  
40 °F

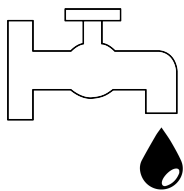
## 2 Place close to a drain



## 3 Place on even surface



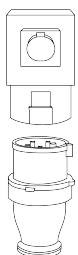
## 4 Fill water into water bath before turning on the THAW unit!



### Water temperature

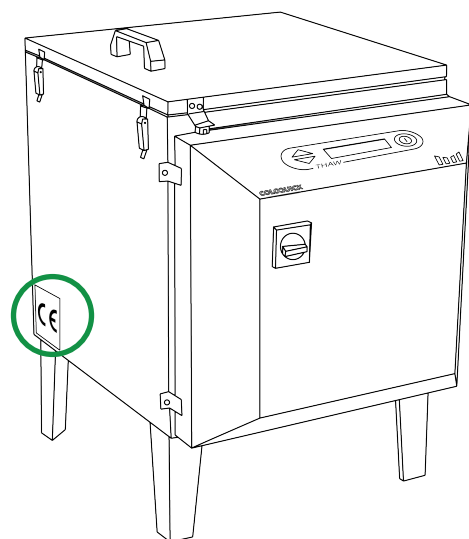
Max. 40 °C  
Max. 104 °F

## 5 Power connection



**OBS: Fill the water bath with water before connecting to power!**

Connect the THAW unit to the correct power source. Any new installations should be performed by professionals.



View the CE marking for correct information on power source.