

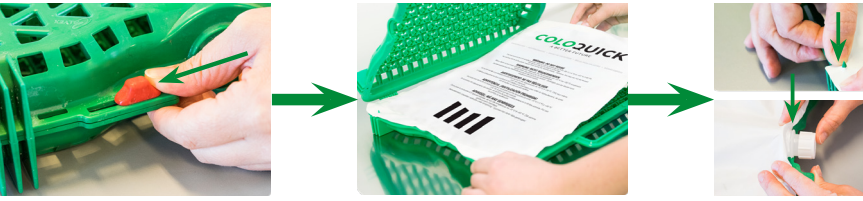
COLOQUICK

FIRST MEAL - BIG DEAL

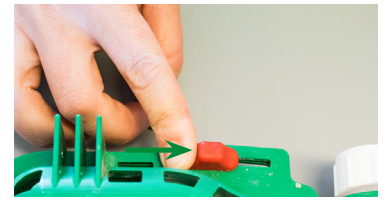


CARTRIDGE ASSEMBLY GUIDE

1 Prepare cartridge with the colostrum bag.



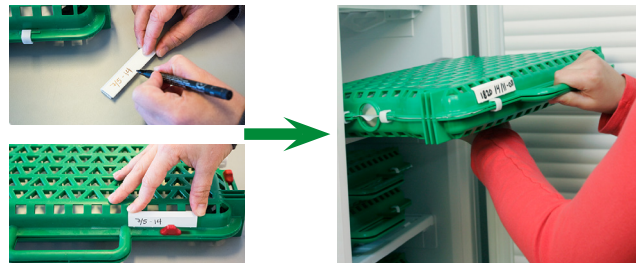
2 Lock cartridge.



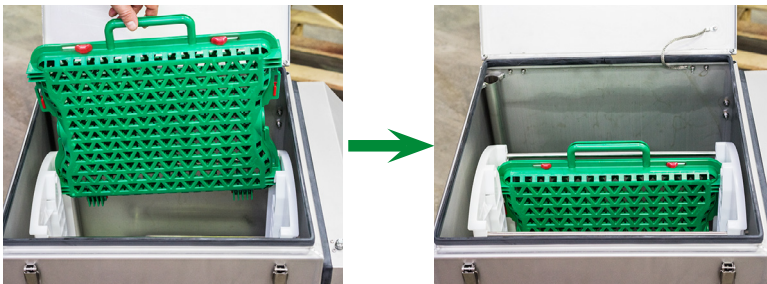
3 Place the cartridge in the filling station and fill up with colostrum.



4 Write the cow ID, date and BRIX value on the tag before placing the cartridge in the freezer.



5 Place the cartridge in the water bath.



*The machine is shown without water in the water bath for information purpose only. Always make sure there is water in the water bath before turning the thawing unit on.

6 Press to remove the cartridge from the water bath.

